

Coachman Specifications **2015**



Upgrade to a Coachman



Model	380/2	450/2	520/4	560/4	565/4	575/4	580/5	640/6
Number of Berths	2	2	4	4	4	4	5	6
Interior Length	4023mm / 13' 2"	4625mm / 15' 2"	5295mm / 17' 4"	5650mm / 18' 6"	5750mm / 18' 10"	5800mm / 19' 0"	5750mm / 18' 10"	6050mm / 19' 10"
Shipping Length	5653mm / 18' 7"	6255mm / 20' 6"	6925mm / 22' 9"	7280mm / 23' 11"	7380mm / 24' 3"	7430mm / 24' 5"	7380mm / 24' 3"	7680mm / 25' 2"
Overall Width	2260mm / 7' 5"	2260mm / 7' 5"	2260mm / 7' 5"	2260mm / 7' 5"	2260mm / 7' 5"	2260mm / 7' 5"	2260mm / 7' 5"	2260mm / 7' 5"
Overall Height (exc. T.V Aerial)	2600mm / 8' 6"	2600mm / 8' 6"	2600mm / 8' 6"	2600mm / 8' 6"	2600mm / 8' 6"	2600mm / 8' 6"	2600mm / 8' 6"	2600mm / 8' 6"
Maximum Headroom	1955mm / 6' 5"	1955mm / 6' 5"	1955mm / 6' 5"	1955mm / 6' 5"	1955mm / 6' 5"	1955mm / 6' 5"	1955mm / 6' 5"	1955mm / 6' 5"
Interior Width	2110mm / 6' 11"	2110mm / 6' 11"	2110mm / 6' 11"	2110mm / 6' 11"	2110mm / 6' 11"	2110mm / 6' 11"	2110mm / 6' 11"	2110mm / 6' 11"
Wheel Rim	5.5J x 14	5.5J x 14	5.5J x 14	5.5J x 14	6.0J x 15	6.0J x 15	6.0J x 15	5.5J x 14
Tyre Size	175 R14 99	185 R14 102	185 R14 102	185 R14 102	195/70 R15 104	195/70 R15 104	195/70 R15 104	185/70 R14 88
Tyre Pressure (at quoted MTPLM)	4.5 bar / 65 psi	4.5 bar / 65 psi	4.5 bar / 65 psi	4.5 bar / 65 psi	4.5 bar / 65 psi	4.5 bar / 65 psi	4.5 bar / 65 psi	2.4 bar / 35 psi
Bed Sizes Option 1	2 x Single 1860mm x 730mm (6' 1" x 2' 4")	2 x Single 1860mm x 730mm (6' 1" x 2' 4")	2 x Single 1860mm x 730mm (6' 1" x 2' 4") 1 x Single 1830mm x 720mm (6' 0" x 2' 4") 1 x Single Bunk 1760mm x 610mm (5' 9" x 2' 0")	2 x Single 1540mm x 730mm (5' 1" x 2' 4") 1 x Double 1900mm x 1320mm (6' 3" x 4' 4")	2 x Single 1540mm x 730mm (5' 1" x 2' 4") 2 x Single (1880mm & 1830mm) x 720mm (6' 2" & 6' 0" x 2' 4")	2 x Single 1540mm x 730mm (5' 1" x 2' 4") 1 x Double 1875mm x 1350mm (6' 2" x 4' 5")	2 x Single 1740mm x 730mm (5' 9" x 2' 4") 1 x Single 1830mm x 720mm (6' 0" x 2' 4") 2 x Single Bunks 1740mm x 620mm (5' 9" x 2' 0")	2 x Single 1860mm x 730mm (6' 1" x 2' 4") 1 x Single 1830mm x 720mm (6' 0" x 2' 4") 1 x Single Bunk 1770mm x 610mm (5' 10" x 2' 0") 2 x Single Bunks 1740mm x 620mm (5' 9" x 2' 0")
Bed Sizes Option 2	1 x Double 2040mm x 1500mm (6' 8" x 4' 11")	1 x Double 2040mm x 1500mm (6' 8" x 4' 11")	1 x Double 2040mm x 1500mm (6' 8" x 4' 11") 1 x Single 1830mm x 720mm (6' 0" x 2' 4") 1 x Single Bunk 1760mm x 610mm (5' 9" x 2' 0")	1 x Double 2040mm x 1180mm (6' 8" x 3' 10") 1 x Double 1900mm x 1320mm (6' 3" x 4' 4")	1 x Double 2040mm x 1180mm (6' 8" x 3' 10") 2 x Single (1880mm & 1830mm) x 720mm (6' 2" & 6' 0" x 2' 4")	1 x Double 2040mm x 1180mm (6' 8" x 3' 10") 1 x Double 1875mm x 1350mm (6' 2" x 4' 5")	1 x Double 2040mm x 1380mm (6' 8" x 4' 6") 1 x Single 1830mm x 720mm (6' 0" x 2' 4") 2 x Single Bunks 1740mm x 620mm (5' 9" x 2' 0")	1 x Double 2040mm x 1500mm (6' 8" x 4' 11") 1 x Single 1830mm x 720mm (6' 0" x 2' 4") 1 x Single Bunk 1770mm x 610mm (5' 10" x 2' 0") 2 x Single Bunks 1740mm x 620mm (5' 9" x 2' 0")
M.T.P.L.M	1210kg / 23.8cwt	1320kg / 26cwt	1465kg / 28.8cwt	1500kg / 29.5cwt	1545kg / 30.4cwt	1540kg / 30.3cwt	1570kg / 30.9cwt	1685kg / 33.1cwt
Mass in Running Order	1092kg / 21.5cwt	1197kg / 23.6cwt	1315kg / 25.8cwt	1346kg / 26.5cwt	1390kg / 27.4cwt	1385kg / 27.3cwt	1405kg / 27.7cwt	1507kg / 29.7cwt
Personal Payload	118kg / 2.3cwt	123kg / 2.4cwt	150kg / 3cwt	154kg / 3cwt	155kg / 3.1cwt	155kg / 3.1cwt	165kg / 3.2cwt	178kg / 3.5cwt
Options Payload	0kg / 0cwt	0kg / 0cwt	0kg / 0cwt	0kg / 0cwt	0kg / 0cwt	0kg / 0cwt	0kg / 0cwt	0kg / 0cwt
Total / Maximum User Payload	118kg / 2.3cwt	123kg / 2.4cwt	150kg / 3cwt	154kg / 3cwt	155kg / 3.1cwt	155kg / 3.1cwt	165kg / 3.2cwt	178kg / 3.5cwt
Maximum Hitch Weight	100kg / 1.9cwt	100kg / 1.9cwt	100kg / 1.9cwt	100kg / 1.9cwt	100kg / 1.9cwt	100kg / 1.9cwt	100kg / 1.9cwt	100kg / 1.9cwt
Empty Noseweight	65kg / 1.3cwt	49kg / 1cwt	54kg / 1.1cwt	58kg / 1.1cwt	56kg / 1.1cwt	67kg / 1.3cwt	42kg / 0.8cwt	46kg / 0.9cwt
Awning Size	840cm	900cm	975cm	1005cm	1015cm	1020cm	1015cm	1045cm

Model	460/2	520/4	560/4	565/4	575/4
Number of Berths	2	4	4	4	4
Interior Length	4625mm / 15' 2"	5295mm / 17' 4"	5650mm / 18' 6"	5750mm / 18' 10"	5800mm / 19' 0"
Shipping Length	6255mm / 20' 6"	6925mm / 22' 9"	7280mm / 23' 11"	7380mm / 24' 3"	7430mm / 24' 5"
Overall Width	2260mm / 7' 5"	2260mm / 7' 5"	2260mm / 7' 5"	2260mm / 7' 5"	2260mm / 7' 5"
Overall Height (exc. T.V Aerial)	2600mm / 8' 6"	2600mm / 8' 6"	2600mm / 8' 6"	2600mm / 8' 6"	2600mm / 8' 6"
Maximum Headroom	1955mm / 6' 5"	1955mm / 6' 5"	1955mm / 6' 5"	1955mm / 6' 5"	1955mm / 6' 5"
Interior Width	2110mm / 6' 11"	2110mm / 6' 11"	2110mm / 6' 11"	2110mm / 6' 11"	2110mm / 6' 11"
Wheel Rim	5.5J x 14	5.5J x 14	6.0J x 15	6.0J x 15	6.0J x 15
Tyre Size	185 R14 102	185 R14 102	195/70 R15 104	195/70 R15 104	195/70 R15 104
Tyre Pressure (at quoted MTPLM)	4.5 bar / 65 psi	4.5 bar / 65 psi	4.5 bar / 65 psi	4.5 bar / 65 psi	4.5 bar / 65 psi
Bed Sizes Option 1	2 x Single 1860mm x 730mm (6' 1" x 2' 4")	2 x Single 1860mm x 730mm (6' 1" x 2' 4") 1 x Single 1830mm x 720mm (6' 0" x 2' 4") 1 x Single Bunk 1760mm x 610mm (5' 9" x 2' 0")	2 x Single 1540mm x 730mm (5' 1" x 2' 4") 1 x Double 1900mm x 1320mm (6' 3" x 4' 4")	2 x Single 1540mm x 730mm (5' 1" x 2' 4") 2 x Single (1880mm & 1830mm) x 720mm (6' 2" & 6' 0" x 2' 4")	2 x Single 1540mm x 730mm (5' 1" x 2' 4") 1 x Double 1875mm x 1350mm (6' 2" x 4' 5")
Bed Sizes Option 2	1 x Double 2040mm x 1500mm (6' 8" x 4' 11")	1 x Double 2040mm x 1500mm (6' 8" x 4' 11") 1 x Single 1830mm x 720mm (6' 0" x 2' 4") 1 x Single Bunk 1760mm x 610mm (5' 9" x 2' 0")	1 x Double 2040mm x 1180mm (6' 8" x 3' 10") 1 x Double 1900mm x 1320mm (6' 3" x 4' 4")	1 x Double 2040mm x 1180mm (6' 8" x 3' 10") 2 x Single (1880mm & 1830mm) x 720mm (6' 2" & 6' 0" x 2' 4")	1 x Double 2040mm x 1180mm (6' 8" x 3' 10") 1 x Double 1875mm x 1350mm (6' 2" x 4' 5")
M.T.P.L.M	1355kg / 26.7cwt	1500kg / 29.5cwt	1555kg / 30.6cwt	1575kg / 31cwt	1565kg / 30.8cwt
Mass in Running Order	1232kg / 24.3cwt	1350kg / 26.6cwt	1401kg / 27.6cwt	1420kg / 28cwt	1410kg / 27.8cwt
Personal Payload	123kg / 2.4cwt	150kg / 3cwt	154kg / 3cwt	155kg / 3.1cwt	155kg / 3.1cwt
Options Payload	0kg / 0cwt	0kg / 0cwt	0kg / 0cwt	0kg / 0cwt	0kg / 0cwt
Total / Maximum User Payload	123kg / 2.4cwt	150kg / 3cwt	154kg / 3cwt	155kg / 3.1cwt	155kg / 3.1cwt
Maximum Hitch Weight	100kg / 1.9cwt	100kg / 1.9cwt	100kg / 1.9cwt	100kg / 1.9cwt	100kg / 1.9cwt
Empty Noseweight	38kg / 0.7cwt	44kg / 0.9cwt	39kg / 0.8cwt	47kg / 0.9cwt	67kg / 1.3cwt
Awning Size	900cm	975cm	1005cm	1015cm	1020cm

Model	460/2	520/4	545/4	560/4	565/4	575/4
Number of Berths	2	4	4	4	4	4
Interior Length	4750mm / 15' 7"	5420mm / 17' 9"	5800mm / 19' 0"	5660mm / 18' 7"	5740mm / 18' 10"	5800mm / 19' 0"
Shipping Length	6405mm / 21' 0"	7075mm / 23' 3"	7455mm / 24' 6"	7315mm / 24' 0"	7395mm / 24' 3"	7455mm / 24' 6"
Overall Width	2320mm / 7' 7"	2320mm / 7' 7"	2320mm / 7' 7"	2320mm / 7' 7"	2320mm / 7' 7"	2320mm / 7' 7"
Overall Height (exc. TV Aerial)	2650mm / 8' 8"	2650mm / 8' 8"	2650mm / 8' 8"	2650mm / 8' 8"	2650mm / 8' 8"	2650mm / 8' 8"
Maximum Headroom	1955mm / 6' 5"	1955mm / 6' 5"	1955mm / 6' 5"	1955mm / 6' 5"	1955mm / 6' 5"	1955mm / 6' 5"
Interior Width	2170mm / 7' 1"	2170mm / 7' 1"	2170mm / 7' 1"	2170mm / 7' 1"	2170mm / 7' 1"	2170mm / 7' 1"
Wheel Rim	5.5J x 14	6.0J x 15	6.0J x 15	6.0J x 15	6.0J x 15	6.0J x 15
Tyre Size	185 R14 102	195/70 R15 104	195/70 R15 104	195/70 R15 104	195/70 R15 104	195/70 R15 104
Tyre Pressure (at quoted MTPLM)	4.5 bar / 65 psi	4.5 bar / 65 psi	4.5 bar / 65 psi	4.5 bar / 65 psi	4.5 bar / 65 psi	4.5 bar / 65 psi
Bed Sizes Option 1	2x Single 1850mm x 715mm (6' 1" x 2' 4")	2x Single 1850mm x 715mm (6' 1" x 2' 4") 1x Single 1830mm x 720mm (6' 0" x 2' 4") 1x Single Bunk 1760mm x 610mm (5' 9" x 2' 0")	2 x Single 1515mm x 715mm (5' 0" x 2' 4") 1 x Double 1815mm x 1370mm (5' 11" x 4' 6")	2 x Single 1515mm x 715mm (5' 0" x 2' 4") 1 x Double 1880mm x 1370mm (6' 2" x 4' 6")	2 x Single 1515mm x 715mm (5' 0" x 2' 4") 1 x Single 1880mm x 680mm (6' 2" x 2' 3") 1 x Single 1830mm x 680mm (6' 0" x 2' 3")	2 x Single 1515mm x 715mm (5' 0" x 2' 4") 1 x Double 1875mm x 1350mm (6' 2" x 4' 5")
Bed Sizes Option 2	1x Double 2025mm x 1520mm (6' 8" x 5' 0")	1x Double 2025mm x 1520mm (6' 8" x 5' 0") 1x Single 1830mm x 720mm (6' 0" x 2' 4") 1 x Single Bunk 1760mm x 610mm (5' 9" x 2' 0")	1 x Double 2025mm x 1160mm (6' 8" x 3' 10") 1 x Double 1815mm x 1370mm (5' 11" x 4' 6")	1 x Double 2025mm x 1160mm (6' 8" x 3' 10") 1 x Double 1880mm x 1370mm (6' 2" x 4' 6")	1 x Double 2025mm x 1160mm (6' 8" x 3' 10") 1 x Single 1880mm x 680mm (6' 2" x 2' 3") 1 x Single 1830mm x 680mm (6' 0" x 2' 3")	1 x Double 2025mm x 1160mm (6' 8" x 3' 10") 1 x Double 1875mm x 1350mm (6' 2" x 4' 5")
M.T.P.L.M	1455kg / 28.6cwt	1600kg / 31.5cwt	1670kg / 32.9cwt	1635kg / 32.2cwt	1660kg / 32.7cwt	1650kg / 32.5cwt
Mass in Running Order	1330kg / 26.2cwt	1449kg / 28.5cwt	1515kg / 29.8cwt	1481kg / 29.2cwt	1505kg / 29.6cwt	1495kg / 29.4cwt
Personal Payload	125kg / 2.4cwt	151kg / 3cwt	155kg / 3.1cwt	154kg / 3cwt	155kg / 3.1cwt	155kg / 3.1cwt
Options Payload	0kg / 0cwt	0kg / 0cwt	0kg / 0cwt	0kg / 0cwt	0kg / 0cwt	0kg / 0cwt
Total / Maximum User Payload	125kg / 2.4cwt	151kg / 3cwt	155kg / 3.1cwt	154kg / 3cwt	155kg / 3.1cwt	155kg / 3.1cwt
Maximum Hitch Weight	100kg / 1.9cwt	100kg / 1.9cwt	100kg / 1.9cwt	100kg / 1.9cwt	100kg / 1.9cwt	100kg / 1.9cwt
Empty Noseweight	37kg / 0.7cwt	42kg / 0.8cwt	55kg / 1.1cwt	48kg / 0.9cwt	62kg / 1.2cwt	62kg / 1.2cwt
Awning Size	928cm	992cm	1038cm	1024cm	1032cm	1038cm

Model	620/4	640/4	650/4
Number of Berths	4	4	4
Interior Length	6215mm / 20' 5"	6215mm / 20' 5"	6215mm / 20' 5"
Shipping Length	7870mm / 25' 10"	7870mm / 25' 10"	7870mm / 25' 10"
Overall Width	2320mm / 7' 7"	2320mm / 7' 7"	2320mm / 7' 7"
Overall Height (exc. TV Aerial) *	2650mm / 8' 8"	2650mm / 8' 8"	2650mm / 8' 8"
Maximum Headroom	1955mm / 6' 5"	1955mm / 6' 5"	1955mm / 6' 5"
Interior Width	2170mm / 7' 1"	2170mm / 7' 1"	2170mm / 7' 1"
Wheel Rim	5.5J x 14	5.5J x 14	5.5J x 14
Tyre Size	185/70 R14 88	185/70 R14 88	185/70 R14 88
Tyre Pressure (at quoted MTPLM)	2.4 bar / 35 psi	2.4 bar / 35 psi	2.4 bar / 35 psi
Bed Sizes Option 1	2 x Single 1880mm x 740mm (6' 2" x 2' 5") 1 x Single 1830mm x 820mm (6' 0" x 2' 8") 1 x Single Bunk 1760mm x 610mm (5' 9" x 2' 0")	1 x Single 1780mm x 740mm (5' 10" x 2' 5") 1 x Single 1600mm x 740mm (5' 3" x 2' 5") 1 x Double 1880mm x 1370mm (6' 2" x 4' 6")	2 x Single 1580mm x 760mm (5' 2" x 2' 6") 1 x Double 1815mm x 1370mm (5' 11" x 4' 6")
Bed Sizes Option 2	1x Double 2080mm x 1450mm (6' 10" x 4' 9") 1 x Single 1830mm x 820mm (6' 0" x 2' 8") 1 x Single Bunk 1760mm x 610mm (5' 9" x 2' 0")	1 x Double 2080mm x 1370mm (6' 10" x 4' 6") 1 x Double 1880mm x 1370mm (6' 2" x 4' 6")	1 x Double 2080mm x 1160mm (6' 10" x 3' 10") 1 x Double 1815mm x 1370mm (5' 11" x 4' 6")
M.T.P.L.M	1840kg / 36.2cwt	1815kg / 35.7cwt	1840kg / 36.2cwt
Mass in Running Order	1681kg / 33.1cwt	1656kg / 32.6cwt	1681kg / 33.1cwt
Personal Payload	159kg / 3.1cwt	159kg / 3.1cwt	159kg / 3.1cwt
Options Payload	0kg / 0cwt	0kg / 0cwt	0kg / 0cwt
Total / Maximum User Payload	159kg / 3.1cwt	159kg / 3.1cwt	159kg / 3.1cwt
Maximum Hitch Weight	100kg / 1.9cwt	100kg / 1.9cwt	100kg / 1.9cwt
Empty Noseweight	57kg / 1.1cwt	70kg / 1.4cwt	81kg / 1.6cwt
Awning Size	1070cm	1070cm	1070cm

* Note:- If air conditioner fitted, overall height will be greater than value specified above



1. Imperial conversions are approximate.
2. Awning dimensions represent the shortest ground to ground awning measurements for 2015 model year Coachman caravans. We do however strongly recommend that you consult your awning supplier before making a purchase as awning manufacturers have different methods of sizing their products.
3. Van height is given with the TV aerial removed.

Coachman Caravan Company Limited

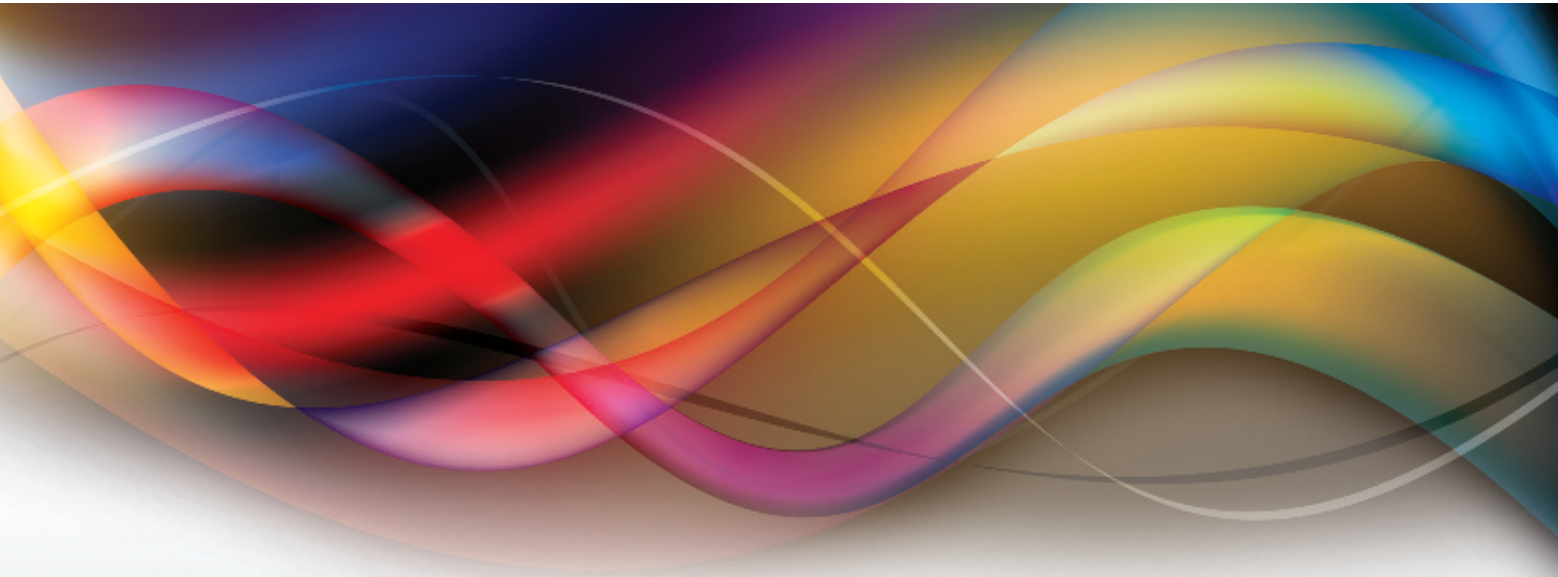
Amsterdam Road
Sutton Fields Industrial Estate
Hull HU7 0XF

Telephone: 01482 839737

Fax: 01482 878143

Email: sales@coachman.co.uk

Upgrade to a Coachman



www.coachman.co.uk

This brochure has been designed to provide you with basic information prior to making a purchase decision. Please refer to your dealer for additional information before you buy.

Coachman Caravan Company Limited reserves the right to alter technical specifications, prices and model ranges as materials and conditions demand and can accept no responsibility for discrepancies between these and subsequent models. Household items illustrated in the brochure have been used to enhance photography and are not supplied with the caravan. Limitations in the printing process may mean colours are not truly represented.

It should be noted that distributors and dealers are not the agents of Coachman Caravan Company Limited and therefore are not authorised to bind the Company by any specific or implied undertaking or representation.

All Coachman models have been certified by the National Caravan Council for compliance with stringent European Standards, British Legislation and industry set Codes of Practice, specifically relating to health and safety issues. The approval process covers the testing and inspection of critical areas of the product from fire safety, weights and dimensions to gas, electrics and ventilation. Every Coachman caravan carries the "NCC Approved Caravan" badge. The NCC also conducts unannounced inspections at the Coachman factory to ensure continued compliance. NCC Approval gives you peace of mind that your caravan is legal and safe.

As the owner of a Coachman caravan, you will be automatically entitled to join our Owners' Club. For more information about the Club, please contact: The Membership Officer, Coachman Owners' Club, 49 Regency Gardens, Yardley Wood, Birmingham B14 4JS. Or visit their website: www.coachmanclub.co.uk

Please note: Touring caravans are designated by the model year. The model year runs from the 1st September to the 31st August: for example a 2015 year model would have been despatched by the manufacturer no earlier than the 15th August, 2014.

Designed and produced by: www.bluestormdesign.co.uk Photography: www.markensett.com

Thank you: Freedom is Ltd.: www.freedomis.co.uk

