



# COACHMAN

**2021**

SERVICE, WARRANTY &  
TECHNICAL DATA MANUAL





## Service and Warranty manual

You are now the owner of a Coachman touring caravan; whether you are a new or experienced caravanner, we hope you will have many years of pleasure in joining the ever growing band of people who choose to spend their leisure time in a Coachman caravan.

In addition to this booklet, which covers the service, warranty and technical data requirements of your caravan, you will also find in the pack of information provided the Coachman Caravan Company Limited Handbook, which together with special equipment leaflets, will provide you with the operational information you require to operate your caravan.

All Coachman models have been certified by the National Caravan Council for compliance with stringent European Standards, British Legislation and industry set Codes of Practice, specifically relating to health and safety issues. The approval process covers the testing and inspection of critical areas of the product from fire

safety, weights and dimensions to gas, electrics and ventilation.

Additionally, we believe that comprehensive and efficient aftercare support is vital in today's market. To reflect this and the confidence we have in our products, every caravan produced by Coachman Caravan Company Limited comes complete with a three year manufacturer's warranty.

This warranty is conditional on annual servicing being carried out as detailed in the following pages. This warranty is designed to reaffirm our commitment to you.

Your supplying dealer is responsible for carrying out a thorough pre-delivery inspection on your caravan and also arranging for any warranty work or routine servicing which may be required. Authorised dealers will be able to supply any replacement parts for your caravan should the need arise along with any accessories you may require. Please note

it is not possible to purchase or obtain replacement parts or accessories from Coachman Caravan Company Limited, they must be supplied by your dealer or approved servicing centre.

**All new caravans must be registered with us by your supplying dealership within 6 weeks of purchase as new.**

**To activate your warranty, the registration form opposite must be completed and returned to Coachman Caravan Company Limited Aftercare Operations by your supplying dealership.**

It should be noted that distributors and dealers are not the agents of Coachman Caravan Company Limited and therefore, are not authorised to bind the company by any specific or implied undertaking or representation.

## Repairs

If you damage your caravan or it should require repairing for any reason, please contact your supplying dealer. These repairs must be carried out by an authorised dealer or approved servicing centre using Coachman genuine parts, recommended sealant and following Coachman procedures.

All Coachman caravans are classed as portable and therefore all warranty work requires the caravan to be delivered and collected from the supplying dealer or approved servicing centre. The cost of transporting, towing or moving the caravan to and from the place of repair is the responsibility of the owner.

## Warranty

All Coachman caravans carry a **three year manufacturer's warranty**. This warranty applies to the UK and Northern Ireland.

During the first twelve months of ownership the Coachman manufacturer's warranty will cover faults arising from manufacturing

defects but not those which are the results of normal wear and tear or accidental damage caused by misuse of any component part of the caravan. Exclusions also include tyres, fuses, LED lighting and bulbs, and proprietary products which are covered by the respective manufacturers' own guarantee and service arrangements.

In years two and three the warranty will cover all original components of the caravan including permanently fitted equipment forming part of the original manufacturer's specification plus water ingress and delamination.

The specific exclusions of the Coachman Caravan Company Ltd warranty during years two and three are bright work and all similar finishes, tables, hinges, knobs, window catches, stays and associated fittings, adjustments, bulbs, LED lighting and electrical connections, entertainments/communications system, microwaves, chrome work and mirrors.

Proprietary products which are covered by the respective manufacturers' own guarantee and service arrangements.

The caravan is not covered if: the manufacturer's identification (17 digit vehicle identification number) has been removed or defaced. The Coachman Three Year Manufacturer's Warranty also excludes the following:

- Failure due to reasons of fair wear and tear
- Damage resulting from accidents
- Misuse of any component
- Replacement of parts which have reached the end of their effective working life because of age and/or usage
- Cleaning or adjustment of any component
- Caravans used for hire or reward
- Caravans used for other than recreational purposes, i.e. for living in or business purposes
- The cost of transporting the caravan, by whatever means, to the place of repair
- Any consequential cost or loss arising
- Damage by mould
- Damage by forces of nature
- Damage by vermin



All Coachman caravan warranties have a requirement that a full annual service is carried out by a competent service centre. This service must be carried out within 90 days either side of the anniversary of the date of the purchase for interim years before the anniversary date of the 3rd year, in accordance with the National Caravan Council's recommendations as detailed in the service section of the Service, Warranty and Technical Data manual; failure to do so will invalidate your Coachman warranty.

Your Service, Warranty and Technical Data manual must be stamped accordingly and the original VAT invoices and damp report must be retained as proof that the annual service has been carried out in accordance with the warranty terms and conditions.

The dealership from which you purchased your caravan is liable for warranty repairs. Any other approved dealer/workshop may carry out work on a caravan at his own convenience and

discretion but is not obliged to.

### Water Ingress

On every new Coachman caravan sold, we offer a comprehensive **6 year water ingress and delamination warranty**:

- Water ingress between new and 6 years - Coachman Caravan Company Limited will pay the total labour costs and supply parts free of charge providing there is a full service history and the 6th service is completed before the anniversary date from the original date of purchase. This applies to water ingress through any permanently sealed joints.

If you purchase a Coachman caravan as a used caravan, it is possible to transfer the unexpired term of the warranty and water ingress cover for up to six years from the original date of purchase.

Please see rear of the **Service, Warranty and Technical Data manual** change of ownership form. This warranty and offer is subject to the conditions, terms and exclusions. A small charge will be made

for carrying out the transfer. This transfer must be completed within 28 days of change of ownership.

**Additionally for 2015 onwards for the first owner, Coachman make a 10 year water ingress warranty:**

- Water ingress between 6 and 10 years - Coachman will pay the total labour cost and supply parts free of charge provided there is a full service history and the 3rd, 6th and 10th service were carried out before the anniversary date on the final year of this offer. This applies to water ingress through any permanently sealed joints.

To preserve this offer your annual services in years 1- 6 have been carried out in line with the service scheduling detailed. In years 7, 8 and 9 are carried out within 90 days either side of the anniversary of the date of purchase.

## Service, Warranty & Technical Data manual

Your caravan requires servicing once a year. Your dealer or approved servicing centre will carry out your annual servicing, and complete the service document at the rear of this handbook as proof of regular maintenance. As with motor vehicle service documents, not only will the proof of regular servicing enhance your caravan resale value but, in the unlikely event of any defect appearing at some later date, a properly serviced and documented caravan service history will enable your dealer to rapidly assess, and where appropriate, carry out the necessary remedial work.

**Regular servicing is a requisite of both the Coachman Caravan Company Limited Warranty and the Coachman Caravan Company Limited Water Ingress warranty.**

### Section (A) Chassis

1. Brakes/lights
2. Suspension
3. Axles and hubs
4. Tyres and pressures
5. Wheel bolts
6. Towing hitch and overrun device
7. Jockey wheel
8. Breakaway cable
9. Corner steadies
10. Check wheel carrier and grease sliding joints
11. Lubrication
12. Operational

### Section (B) Exterior

1. Exterior panels
2. Windows
3. Rooflights
4. Entrance door/door locks
5. Wheel boxes
6. Mouldings
7. Gas bottle and locker
8. Ventilation

9. Paintwork
10. All seals, mouldings etc
11. Reflectors
12. Graphics

### Section (C) Interior

1. Wall panels
2. Furniture
3. Curtains/blinds/flyscreens
4. Bedding/seating
5. Carpet
6. Doors and drawers
7. All hinges and catches
8. Ventilation
9. Hoses and sink plugs
10. Hot water system
11. Cold water system
12. Window hinges and stays
13. Cassette toilet
14. Shower
15. Shower tray
16. Central heating
17. Damp test

### Section (D) Electrical

1. All interior lights/

- road lights
2. Water pump and switches
3. Refrigerator
4. Distribution unit
5. Charging unit
6. Junction box
7. Wiring and supports
8. Trailer connecting plugs
9. Overall tests ext. lights
10. Awning light
11. Electronic ignition (hob)
12. 12V/230V System where applicable

### Section (E) Gas Installation

1. Hob burners
2. Oven
3. Heater
4. Fridge
5. Water heating
6. Fully operational
7. Leak tested

### Section (F) Final

1. Road test



## ANNUAL SERVICE RECORD

CARAVAN MODEL .....

VEHICLE IDENTIFICATION NUMBER .....

### 1ST SERVICE

To be completed between weeks 39 & 65 since purchase.

Date:

Dealer's stamp:

I/We certify that an annual service has been carried out in accordance with the manufacturer's and National Caravan Council recommendations.

### 2ND SERVICE

To be completed between weeks 91 & 117 since purchase.

Date:

Dealer's stamp:

I/We certify that an annual service has been carried out in accordance with the manufacturer's and National Caravan Council recommendations.

### 3RD SERVICE

To be completed between weeks 143 & 156 since purchase.

Date:

Dealer's stamp:

I/We certify that an annual service has been carried out in accordance with the manufacturer's and National Caravan Council recommendations.

### 4TH SERVICE

To be completed between weeks 195 & 221 since purchase.

Date:

Dealer's stamp:

I/We certify that an annual service has been carried out in accordance with the manufacturer's and National Caravan Council recommendations.

### 5TH SERVICE

To be completed between weeks 248 & 272 since purchase.

Date:

Dealer's stamp:

I/We certify that an annual service has been carried out in accordance with the manufacturer's and National Caravan Council recommendations.

### 6TH SERVICE

To be completed by week 312 since purchase.

Date:

Dealer's stamp:

I/We certify that an annual service has been carried out in accordance with the manufacturer's and National Caravan Council recommendations.

## Service, Warranty & Technical Data manual

### 7TH SERVICE

To be completed between weeks 352 & 376 since purchase.

Date:

Dealer's stamp:

I/We certify that an annual service has been carried out in accordance with the manufacturer's and National Caravan Council recommendations.

### 8TH SERVICE

To be completed between weeks 404 & 428 since purchase.

Date:

Dealer's stamp:

I/We certify that an annual service has been carried out in accordance with the manufacturer's and National Caravan Council recommendations.

### 9TH SERVICE

To be completed between weeks 456 & 480 since purchase.

Date:

Dealer's stamp:

I/We certify that an annual service has been carried out in accordance with the manufacturer's and National Caravan Council recommendations.

### 10TH SERVICE

To be completed by week 520 since purchase.

Date:

Dealer's stamp:

I/We certify that an annual service has been carried out in accordance with the manufacturer's and National Caravan Council recommendations.

### 11TH SERVICE

Date:

Dealer's stamp:

I/We certify that an annual service has been carried out in accordance with the manufacturer's and National Caravan Council recommendations.

### 12TH SERVICE

Date:

Dealer's stamp:

I/We certify that an annual service has been carried out in accordance with the manufacturer's and National Caravan Council recommendations.

### 13TH SERVICE

Date:

Dealer's stamp:

I/We certify that an annual service has been carried out in accordance with the manufacturer's and National Caravan Council recommendations.

### 14TH SERVICE

Date:

Dealer's stamp:

I/We certify that an annual service has been carried out in accordance with the manufacturer's and National Caravan Council recommendations.

### 15TH SERVICE

Date:

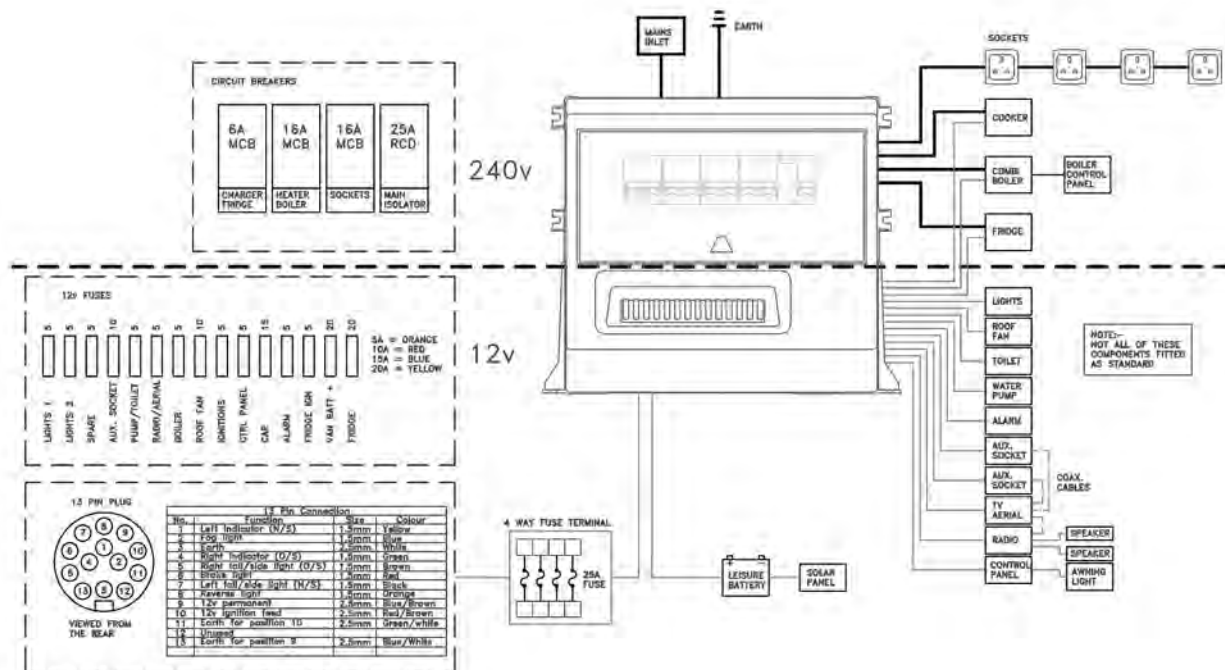
Dealer's stamp:

I/We certify that an annual service has been carried out in accordance with the manufacturer's and National Caravan Council recommendations.



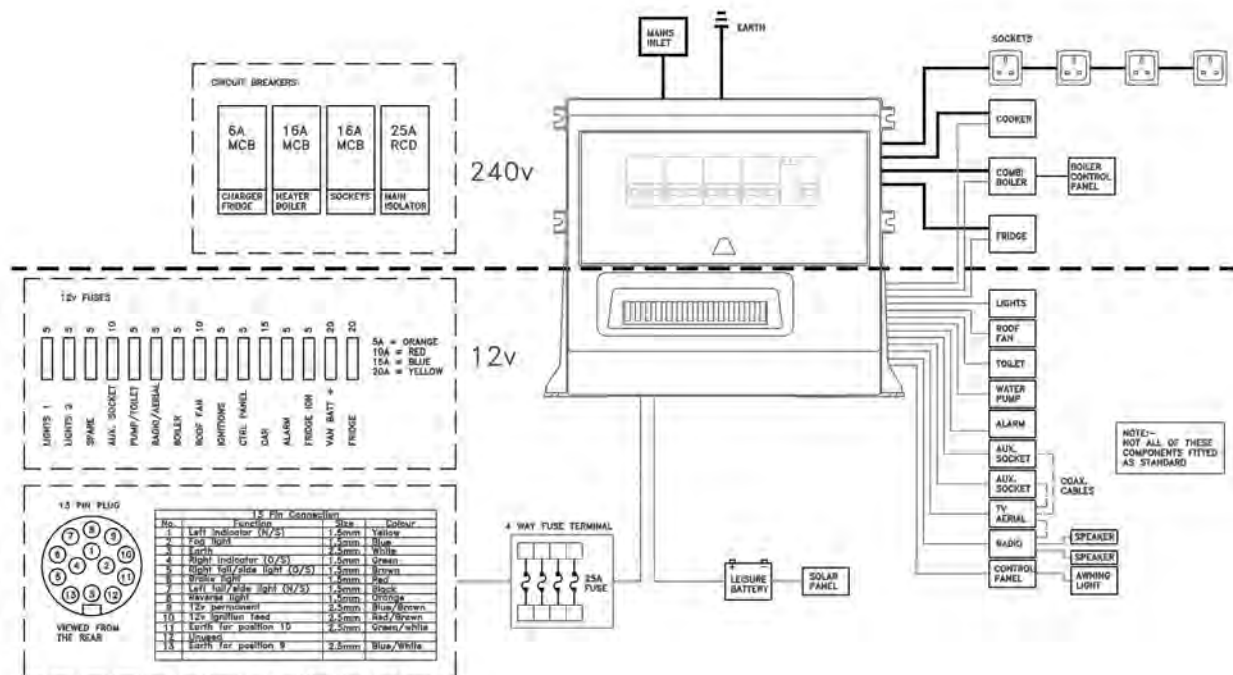


## 2021 Coachman Acadia circuit diagram

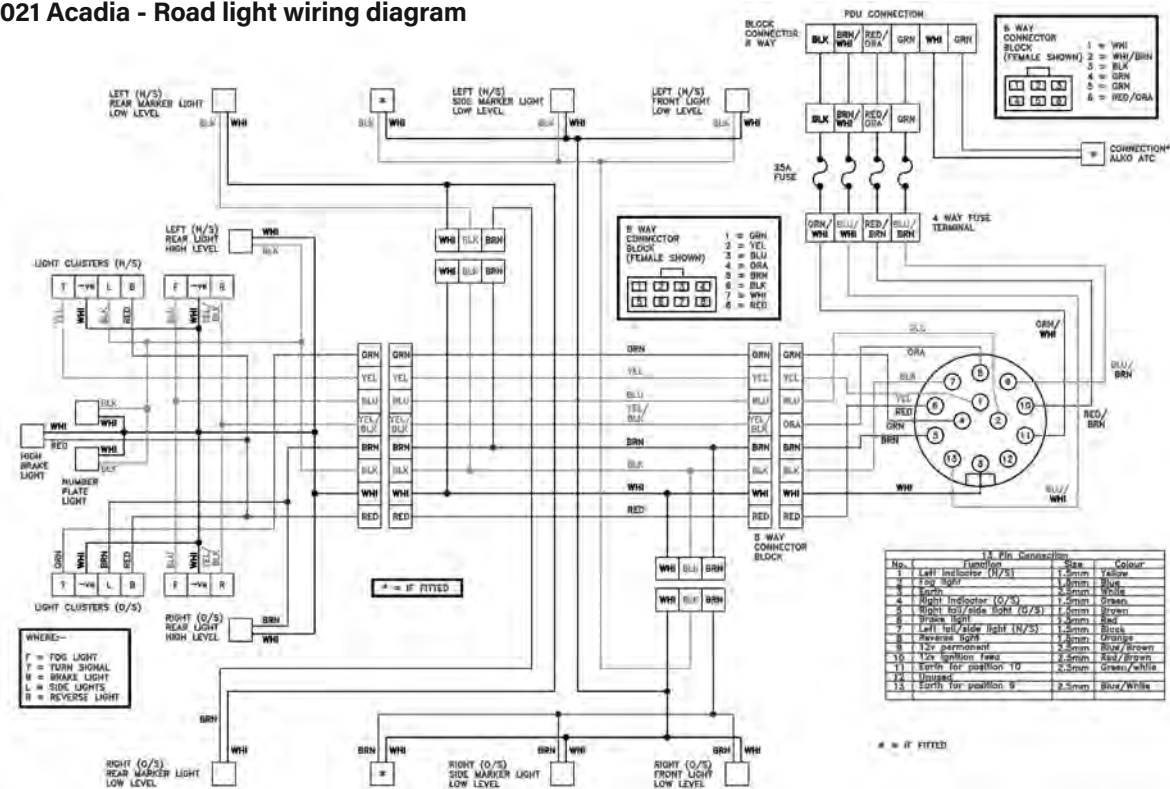


# Service, Warranty & Technical Data manual

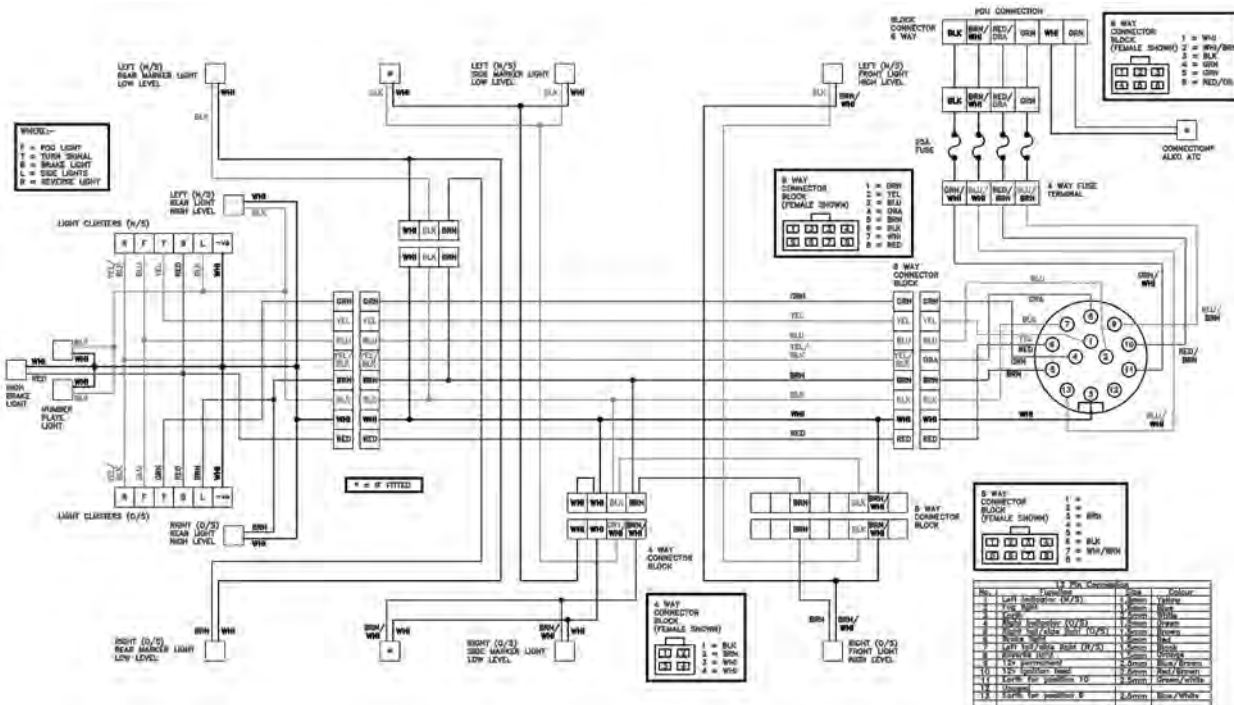
## 2021 Coachman VIP/Laser/Laser Xcel/Lusso (all versions) circuit diagram



## 2021 Acadia - Road light wiring diagram



## 2021 VIP/Laser/Laser Xcel/Lusso (all versions) - Road light wiring diagram



All LED lights are irreplaceable - unit needs to be replaced.

## External Road lights

LIGHT	BULB
Number plate light	12V 5W clear festoon bulb
COBO oval combination lamp - fog/ reverse - Acadia only	2 x 12V 21W clear bulb (bayonet), (P21W)
COBO oval combination lamp - stop/ tail/ indicator- Acadia only	1 x 12V 21W clear bulb (bayonet),(P21W)
	1 x 12V 21/5W clear double filament bulb (bayonet) P21W/5W
Caraluna X L/H rear cluster light - VIP, Laser, Laser Xcel and Lusso only	1 x 12V tail lamp / brake light (P21/5W) twin filament
	1 x 12V indicator light (PY21W)
	1 x 12V reversing light (P21W)
	1 x 12V rear fog light (H21W)
Caraluna X R/H rear cluster light - VIP, Laser, Laser Xcel and Lusso only	1 x 12V tail lamp / brake light (P21/5W) twin filament
	1 x 12V indicator light (PY21W)
	1 x 12V reversing light (P21W)
	1 x 12V rear fog light (H21W)
Red and white end outline LED marker light - Acadia only	1 x 12V 5W clear bulb (bayonet)

## Service, Warranty & Technical Data manual

### Manufacturer administrating warranty with dealers

Appliance/ Component	Address of company providing warranty	Warranty Term	Contact number
Chassis, axle & under gear hitch, traction control and wheel lock (where fitted)	AL-KO, South Warwickshire Business Park, Kineton Road, Southam, Warwickshire CV47 0AL	36 months	01926 818500
Entertainment system	Base Systems Limited, B19 Ribble Court, Red Scar Business Park, Preston, PR2 5NJ	12 months	01772 886000
Alarm (where fitted)	Phantum Ltd, 154-156 Higher Hillgate, Stockport, Greater Manchester, SK1 3QT	24 months	0161 476 4050
Polyplastic windows	Miriad Products Limited, Park Lane, Dove Valley Business Park, Foston, South Derbyshire DE65 5BG	Optical 3 months Technical 24 months	01283 586060
Power centre/ chargers/ loom/ relays/ consumer unit control panels	BCA Leisure Limited, Unit H9 Premier Way, Lowfields Business Park, Elland HX5 9HF	36 months	01422 376977
Refrigerator	Dometic UK Limited, Dometic House, The Brewery, Blandford Dorset, DT11 9LS	36 months	0344 626 0133
Toilet, cooker and hob	Thetford Limited, Unit 6 Brookfields Way, Wath Upon Dearne, Rotherham S63 5DL	36 months	0844 997 1960
Soft furnishings	Belfield Furnishings Limited, Site 3, Furnace Road, Ilkeston DE7 5EP	36 months Fabric light fastness 12 months	0115 907 1700
Heating systems	Alde International (UK) Limited, Huxley Close, Park Farm South, Wellingborough NN8 6AB	36 months	01933 677765
Water systems	Whale, 2 Enterprise Road, Bangor, Co. Down, Northern Ireland BT19 7TA	36 months	028 9127 0531
Gas components	Whale, 2 Enterprise Road, Bangor, Co. Down, Northern Ireland BT19 7TA	36 months	028 9127 0531
Phantom Tracker (where fitted)	Phantom Ltd, 154 - 156 Higher Hillgate, Stockport, Greater Manchester, SK1 3QT	12 months	0161 476 4050
Smoke alarm	FireAngel, Vanguard Centre, Sir William Lyons Road, Coventry CV4 7EZ	36 months	0330 094 5830
Carbon monoxide alarm		84 months	
Solar panel and regulator (where fitted)	Solar Technology International Limited, Unit 6 Station Drive, Bredon, Tewsbury, Gloucestershire GL20 7HH	*See below	01684 774000
Self levelling system (where fitted)	E + P Hydraulics, 10 Elder Court, Lions Dr, Blackburn BB1 2EQ	24 months	01254 297785



**The technical data information has been prepared to provide you with the dimensions, weights and sizes applicable to your caravan. It is recommended that you study the weight, size and tyre pressure information contained in this booklet to familiarise yourself with the specification of your caravan. For equipment operational information you should refer to the Coachman 2021 Handbook and the additional leaflets contained in your Owners' Information Pack.**

All Coachman models have been certified by the National Caravan Council for compliance with stringent European Standards, British Legislation and industry set Codes of Practice, specifically relating to health and safety issues. The approval process covers the testing and inspection of critical areas of the product from fire safety, weights and dimensions to gas, electrics and ventilation.

Every Coachman caravan carries the "NCC Approved Caravan" badge. The NCC also conducts unannounced inspections at the Coachman factory to ensure continued compliance. NCC Approval gives you peace of mind that your caravan is legal and safe.

## Acadia standard specifications (based on the models below)

MODEL	460	520	545
Number of Berths	2	3	4
Interior Length	4625mm / 15' 2"	5295mm / 17' 4"	5760mm / 18' 11"
Shipping Length	6255mm / 20' 6"	6925mm / 22' 9"	7390mm / 24' 3"
Overall Width	2260mm / 7' 5"	2260mm / 7' 5"	2260mm / 7' 5"
Overall Height (including T.V Aerial)	2650mm / 8' 8"	2650mm / 8' 8"	2650mm / 8' 8"
Maximum Headroom	1955mm / 6' 5"	1955mm / 6' 5"	1955mm / 6' 5"
Wheel Rim	5.5J x 14	5.5J x 14	6.0J x 15
Tyre Size	185 R14 104	185 R14 104	195/70 R15 104
Tyre Pressure (bar / psi at quoted MTPLM)	4.5 / 65	4.5 / 65	4.5 / 65
Bed Sizes - mm - option 1	2 x Single 1840 x 700 (6' 0" x 2' 3")	2 x Single 1840 x 700 (6' 0" x 2' 3") 1 x Single 1830 x 720 (6' 0" x 2' 4")	2 x Single 1465 x 700 (4' 9" x 2' 3") 1 x Double 1930 x 1360 (6' 4" x 4' 5")
Bed Sizes - mm - option 2	1 x Double 2010 x 1725 (6' 7" x 5' 7")	1 x Double 2010 x 1725 (6' 7" x 5' 7") 1 x Single 1830 x 720 (6' 0" x 2' 4")	1 x Double 2010 x 1350 (6' 7" x 4' 5") 1 x Double 1930 x 1360 (6' 4" x 4' 5")
MTPLM	1360kg / 26.8cwt*	1455kg / 28.6cwt	1597kg / 31.4cwt
Mass in Running Order	1236kg / 24.3cwt*	1314kg / 25.8cwt	1442kg / 28.4cwt
Personal Payload	124kg / 2.4cwt	141kg / 2.8cwt	155kg / 3.1cwt
Options Payload	0kg / 0cwt	0kg / 0cwt	0kg / 0cwt
Total / Maximum User Payload	124kg / 2.4cwt	141kg / 3.1cwt	155kg / 3.1cwt
Maximum Hitch Weight	100kg / 1.9 cwt	100kg / 1.9cwt	100kg / 1.9cwt
Upper MTPLM (Optional weight plate upgrade)	1400kg	1500kg	1600kg

\* Estimated weights. Please refer to the website for confirmed weights. Note:- Please consult your dealer for terms and conditions regarding a weight plate upgrade to the upper MTPLM.





## Acadia standard specifications (based on the models below)

MODEL	565	575	830 Xcel
Number of Berths	4	4	5
Interior Length	5710mm / 18' 9"	5760mm / 18' 11"	6265mm / 20' 7"
Shipping Length	7340mm / 24' 1"	7390mm / 24' 3"	7895mm / 25' 11"
Overall Width	2260mm / 7' 5"	2260mm / 7' 5"	2440mm / 8' 0"
Overall Height (including TV Aerial)	2650mm / 8' 8"	2650mm / 8' 8"	2650mm / 8' 8"
Maximum Headroom	1955mm / 6' 5"	1955mm / 6' 5"	1955mm / 6' 5"
Wheel Rim	6.0J x 15	5.5J x 14	5.5J x 14
Tyre Size	195/70 R15 104	185 R14 104	185/70 R14 88
Tyre Pressure (bar / psi at quoted MTPLM)	4.5 / 65	4.5 / 65	2.4 / 35
Bed Sizes - mm - option 1	2 x Single 1465 x 700 (4' 9" x 2' 3") 2 x Single 1910 x 720 (6' 3" x 2' 4") 1825 x 720 (6' 0" x 2' 4")	2 x Single 1465 x 700 (4' 9" x 2' 3") 1 x Double 1875 x 1370 (6' 2" x 4' 6")	1 x Single 1980 x 760 (6' 5" x 2' 5") 1 x Single 1740 x 700 (5' 8" x 2' 3") 1 x Single 1872 x 1032 (6' 1" x 3' 4") 2 x Single 1970 x 695 (6' 5" x 2' 3")
Bed Sizes - mm - option 2	1 x Double 2010 x 1350 (6' 7" x 4' 5") 2 x Single 1910 x 720 (6' 2" x 2' 4") 1825 x 720 (6' 0" x 2' 4")	1 x Double 2010 x 1350 (6' 7" x 4' 5") 1 x Double 1875 x 1370 (6' 2" x 4' 6")	1 x Double 1980 x 1740 (6' 5" x 4' 8") 1 x Single 1872 x 1032 (6' 1" x 3' 4") 2 x Single 1970 x 695 (6' 5" x 2' 3")
MTPLM	1586kg / 31.2cwt	1547kg / 30.5cwt	1820kg / 35.8cwt
Mass in Running Order	1431kg / 28.2cwt	1392kg / 27.4cwt	1650kg / 32.5cwt
Personal Payload	155kg / 3.1cwt	155kg / 3.1cwt	170kg / 3.3cwt
Options Payload	0kg / 0cwt	0kg / 0cwt	0kg / 0cwt
Total / Maximum User Payload	155kg / 3.1cwt	155kg / 3.1cwt	170kg / 3.3cwt
Maximum Hitch Weight	100kg / 1.9cwt	100kg / 1.9cwt	100kg / 1.9cwt
Upper MTPLM (Optional weight plate upgrade)	1600kg	1550kg	2000kg

\* Estimated weights. Please refer to the website for confirmed weights. Note:- Please consult your dealer for terms and conditions regarding a weight plate upgrade to the upper MTPLM.

## Acadia standard specifications (based on the models below)

MODEL	860 Xcel	875 Xcel	
Number of Berths	5	4	
Interior Length	6265mm / 20' 7"	6265mm / 20' 7"	
Shipping Length	7895mm / 25' 11"	7895mm / 25' 11"	
Overall Width	2440mm / 8' 0"	2440mm / 8' 0"	
Overall Height (including T.V Aerial)	2650mm / 8' 8"	2650mm / 8' 8"	
Maximum Headroom	1955mm / 6' 5"	1955mm / 6' 5"	
Wheel Rim	5.5J x 14	5.5J x 14	
Tyre Size	185/70 R14 88	185/70 R14 88	
Tyre Pressure (bar / psi at quoted MTPLM)	2.4 / 35	2.4 / 35	
Bed Sizes - mm - option 1	1 x Single 1980 x 760 (6' 5" x 2' 5") 1 x Single 1740 x 700 (5' 8" x 2' 3") 1 x Single 1872 x 1032 (6' 1" x 3' 4") 1 x Double 1900 x 1320 (6' 2" x 4' 4")	2 x Single 1505 x 725 (5' 0" x 2' 4") 1 x Double 1875 x 1370 (6' 2" x 4' 6")	
Bed Sizes - mm - option 2	1 x Double 1980 x 1740 (6' 5" x 4' 8") 1 x Single 1872 x 1032 (6' 1" x 3' 4") 1 x Double 1900 x 1320 (6' 2" x 4' 4")	1 x Double 2200 x 1390 (7' 2" x 4' 7") 1 x Double 1875 x 1370 (6' 2" x 4' 6")	
MTPLM	1805kg / 35.5cwt	1825kg / 35.9cwt*	
Mass in Running Order	1635kg / 32.2cwt	1665kg / 32.8cwt*	
Personal Payload	170kg / 3.3cwt	160kg / 3.1cwt	
Options Payload	0kg / 0cwt	0kg / 0cwt	
Total / Maximum User Payload	170kg / 3.3cwt	160kg / 3.1cwt	
Maximum Hitch Weight	100kg / 1.9cwt	100kg / 1.9cwt	
Upper MTPLM (Optional weight plate upgrade)	2000kg	2000kg	

\* Estimated weights. Please refer to the website for confirmed weights. Note:- Please consult your dealer for terms and conditions regarding a weight plate upgrade to the upper MTPLM.



## Acadia dealer specials specifications (based on the models below)

MODEL	460	520	545
Number of Berths	2	3	4
Interior Length	4625mm / 15' 2"	5295mm / 17' 4"	5760mm / 18' 11"
Shipping Length	6255mm / 20' 6"	6925mm / 22' 9"	7390mm / 24' 3"
Overall Width	2260mm / 7' 5"	2260mm / 7' 5"	2260mm / 7' 5"
Overall Height (including TV Aerial)	2650mm / 8' 8"	2650mm / 8' 8"	2650mm / 8' 8"
Maximum Headroom	1955mm / 6' 5"	1955mm / 6' 5"	1955mm / 6' 5"
Wheel Rim	5.5J x 14	5.5J x 14	6.0J x 15
Tyre Size	185 R14 104	185 R14 104	195/70 R15 104
Tyre Pressure (bar / psi at quoted MTPLM)	4.5 / 65	4.5 / 65	4.5 / 65
Bed Sizes - mm - option 1	2 x Single 1840 x 700 (6' 0" x 2' 3")	2 x Single 1840 x 700 (6' 0" x 2' 3") 1 x Single 1830 x 720 (6' 0" x 2' 4")	2 x Single 1465 x 700 (4' 9" x 2' 3") 1 x Double 1930 x 1360 (6' 4" x 4' 5")
Bed Sizes - mm - option 2	1 x Double 2010 x 1725 (6' 7" x 5' 7")	1 x Double 2010 x 1725 (6' 7" x 5' 7") 1 x Single 1830 x 720 (6' 0" x 2' 4")	1 x Double 2010 x 1350 (6' 7" x 4' 5") 1 x Double 1930 x 1360 (6' 4" x 4' 5")
MTPLM	1374kg / 27cwt	1468kg / 28.9cwt	1600kg / 31.5cwt
Mass in Running Order	1250kg / 24.6cwt	1327kg / 26.1cwt	1445kg / 28.4cwt
Personal Payload	124kg / 2.4cwt	141kg / 2.8cwt	155kg / 3.1cwt
Options Payload	0kg / 0cwt	0kg / 0cwt	0kg / 0cwt
Total / Maximum User Payload	124kg / 2.4cwt	141kg / 2.8cwt	155kg / 3.1cwt
Maximum Hitch Weight	100kg / 1.9 cwt	100kg / 1.9cwt	100kg / 1.9cwt
Upper MTPLM (Optional weight plate upgrade)	1400kg	1500kg	1600kg

\* Estimated weights. Please refer to the website for confirmed weights. Note:- Please consult your dealer for terms and conditions regarding a weight plate upgrade to the upper MTPLM.

## Acadia dealer specials specifications (based on the models below)

MODEL	565	575	830 Xcel
Number of Berths	4	4	5
Interior Length	5710mm / 18' 9"	5760mm / 18' 11"	6265mm / 20' 7"
Shipping Length	7340mm / 24' 1"	7390mm / 24' 3"	7895mm / 25' 11"
Overall Width	2260mm / 7' 5"	2260mm / 7' 5"	2440mm / 8' 0"
Overall Height (including TV Aerial)	2650mm / 8' 8"	2650mm / 8' 8"	2650mm / 8' 8"
Maximum Headroom	1955mm / 6' 5"	1955mm / 6' 5"	1955mm / 6' 5"
Wheel Rim	6.0J x 15	5.5J x 14	5.5J x 14
Tyre Size	195/70 R15 104	185 R14 104	185/70 R14 88
Tyre Pressure (bar / psi at quoted MTPLM)	4.5 / 65	4.5 / 65	2.4 / 35
Bed Sizes - mm - option 1	2 x Single 1465 x 700 (4' 9" x 2' 3") 2 x Single 1910 x 720 (6' 3" x 2' 4") 1825 x 720 (6' 0" x 2' 4")	2 x Single 1465 x 700 (4' 9" x 2' 3") 1 x Double 1875 x 1370 (6' 2" x 4' 6")	1 x Single 1980 x 760 (6' 5" x 2' 5") 1 x Single 1740 x 700 (5' 8" x 2' 3") 1 x Single 1872 x 1032 (6' 1" x 3' 4") 2 x Single 1970 x 695 (6' 5" x 2' 3")
Bed Sizes - mm - option 2	1 x Double 2010 x 1350 (6' 7" x 4' 5") 2 x Single 1910 x 720 (6' 2" x 2' 4") 1825 x 720 (6' 0" x 2' 4")	1 x Double 2010 x 1350 (6' 7" x 4' 5") 1 x Double 1875 x 1370 (6' 2" x 4' 6")	1 x Double 1980 x 1740 (6' 5" x 4' 8") 1 x Single 1872 x 1032 (6' 1" x 3' 4") 2 x Single 1970 x 695 (6' 5" x 2' 3")
MTPLM	1600kg / 31.4cwt	1550kg / 30.5cwt	1838kg / 36.2cwt
Mass in Running Order	1445kg / 28.4cwt	1395kg / 27.5cwt	1668kg / 32.8cwt
Personal Payload	155kg / 3.1cwt	155kg / 3.1cwt	170kg / 3.3cwt
Options Payload	0kg / 0cwt	0kg / 0cwt	0kg / 0cwt
Total / Maximum User Payload	155kg / 3.1cwt	155kg / 3.1cwt	170kg / 3.3cwt
Maximum Hitch Weight	100kg / 1.9cwt	100kg / 1.9cwt	100kg / 1.9cwt
Upper MTPLM (Optional weight plate upgrade)	1600kg	1550kg	2000kg

\* Estimated weights. Please refer to the website for confirmed weights. Note:- Please consult your dealer for terms and conditions regarding a weight plate upgrade to the upper MTPLM.



## Acadia dealer specials specifications (based on the models below)

MODEL	860 Xcel	875 Xcel	
Number of Berths	5	4	
Interior Length	6265mm / 20' 7"	6265mm / 20' 7"	
Shipping Length	7895mm / 25' 11"	7895mm / 25' 11"	
Overall Width	2440mm / 8' 0"	2440mm / 8' 0"	
Overall Height (including TV Aerial)	2650mm / 8' 8"	2650mm / 8' 8"	
Maximum Headroom	1955mm / 6' 5"	1955mm / 6' 5"	
Wheel Rim	5.5J x 14	5.5J x 14	
Tyre Size	185/70 R14 88	185/70 R14 88	
Tyre Pressure (bar / psi at quoted MTPLM)	2.4 / 35	2.4 / 35	
Bed Sizes - mm - option 1	1 x Single 1980 x 760 (6' 5" x 2' 5") 1 x Single 1740 x 700 (5' 8" x 2' 3") 1 x Single 1872 x 1032 (6' 1" x 3' 4") 1 x Double 1900 x 1320 (6' 2" x 4' 4")	2 x Single 1505 x 725 (5' 0" x 2' 4") 1 x Double 1875 x 1370 (6' 2" x 4' 6")	
Bed Sizes - mm - option 2	1 x Double 1980 x 1740 (6' 5" x 4' 8") 1 x Single 1872 x 1032 (6' 1" x 3' 4") 1 x Double 1900 x 1320 (6' 2" x 4' 4")	1 x Double 2200 x 1390 (7' 2" x 4' 7") 1 x Double 1875 x 1370 (6' 2" x 4' 6")	
MTPLM	1819kg / 35.8cwt	1838kg / 36.2cwt*	
Mass in Running Order	1649kg / 32.5cwt	1678kg / 33cwt*	
Personal Payload	170kg / 3.3cwt	160kg / 3.1cwt	
Options Payload	0kg / 0cwt	0kg / 0cwt	
Total / Maximum User Payload	170kg / 3.3cwt	160kg / 3.1cwt	
Maximum Hitch Weight	100kg / 1.9cwt	100kg / 1.9cwt	
Upper MTPLM (Optional weight plate upgrade)	2000kg	2000kg	

\* Estimated weights. Please refer to the website for confirmed weights. Note:- Please consult your dealer for terms and conditions regarding a weight plate upgrade to the upper MTPLM.

## VIP standard specifications (based on the models below)

MODEL	460	520	545
Number of Berths	2	3	4
Interior Length	4750mm / 15' 7"	5420mm / 17' 9"	5800mm / 19' 0"
Shipping Length	6380mm / 20' 11"	7050mm / 23' 2"	7430mm / 24' 5"
Overall Width	2310mm / 7' 7"	2310mm / 7' 7"	2310mm / 7' 7"
Overall Height (including T.V Aerial)	2650mm / 8' 8"	2650mm / 8' 8"	2650mm / 8' 8"
Overall Height (including Air Conditioner)	2750mm / 9' 0"	2750mm / 9' 0"	2750mm / 9' 0"
Maximum Headroom	1955mm / 6' 5"	1955mm / 6' 5"	1955mm / 6' 5"
Wheel Rim	5.5J x 14	5.5J x 14	6.0J x 15
Tyre Size	185 R14 104	185 R14 104	195/70 R15 104
Tyre Pressure (bar / psi at quoted MTPLM)	4.5 / 65	4.5 / 65	4.5 / 65
Bed Sizes - mm - option 1	2 x Single 1845 x 725 (6' 0" x 2' 4")	2 x Single 1845 x 725 (6' 0" x 2' 4") 1 x Single 1830 x 720 (6' 0" x 2' 4")	2 x Single 1505 x 725 (5' 0" x 2' 4") 1 x Double 1920 x 1370 (6' 3" x 4' 6")
Bed Sizes - mm - option 2	1 x Double 2075 x 1720 (6' 9" x 5' 8")	1 x Double 2075 x 1720 (6' 9" x 5' 8") 1 x Single 1830 x 720 (6' 0" x 2' 4")	1 x Double 2075 x 1390 (6' 9" x 4' 7") 1 x Double 1920 x 1370 (6' 3" x 4' 6")
MTPLM	1444kg / 28.4cwt	1544kg / 30.4cwt	1662kg / 32.7cwt
Mass in Running Order	1319kg / 26cwt	1402kg / 27.6cwt	1506kg / 29.6cwt
Personal Payload	125kg / 2.4cwt	142kg / 2.8cwt	156kg / 3.1cwt
Options Payload	0kg / 0cwt	0kg / 0cwt	0kg / 0cwt
Total / Maximum User Payload	125kg / 2.4cwt	142kg / 2.8cwt	156kg / 3.1cwt
Maximum Hitch Weight	100kg / 1.9cwt	100kg / 1.9cwt	100kg / 1.9cwt
Upper MTPLM (Optional weight plate upgrade)	1500kg	1550kg	1700kg

\* Estimated weights. Please refer to the website for confirmed weights. Note:- Please consult your dealer for terms and conditions regarding a weight plate upgrade to the upper MTPLM.



## VIP standard specifications (based on the models below)

MODEL	565	575	
Number of Berths	4	4	
Interior Length	5740mm / 18' 10"	5800mm / 19' 0"	
Shipping Length	7370mm / 24' 2"	7430mm / 24' 5"	
Overall Width	2310mm / 7' 7"	2310mm / 7' 7"	
Overall Height (including TV Aerial)	2650mm / 8' 8"	2650mm / 8' 8"	
Overall Height (including Air Conditioner)	2750mm / 9' 0"	2750mm / 9' 0"	
Maximum Headroom	1955mm / 6' 5"	1955mm / 6' 5"	
Wheel Rim	6.0J x 15	6.0J x 15	
Tyre Size	195/70 R15 104	195/70 R15 104	
Tyre Pressure (bar / psi at quoted MTPLM)	4.5 / 65	4.5 / 65	
Bed Sizes - mm - option 1	2 x Single 1505 x 725 (5' 0" x 2' 4") 1 x Single 1910 x 720 (6' 3" x 2' 4") 1 x Single 1825 x 720 (6' 0" x 2' 4")	2 x Single 1505 x 725 (5' 0" x 2' 4") 1 x Double 1875 x 1370 (6' 2" x 4' 6")	
Bed Sizes - mm - option 2	1 x Double 2075 x 1390 (6' 9" x 4' 7") 1 x Single 1910 x 720 (6' 3" x 2' 4") 1 x Single 1825 x 720 (6' 0" x 2' 4")	1 x Double 2075 x 1390 (6' 9" x 4' 7") 1 x Double 1875 x 1370 (6' 2" x 4' 6")	
MTPLM	1652kg / 32.5cwt	1642kg / 32.3cwt	
Mass in Running Order	1497kg / 29.5cwt	1486kg / 29.3cwt	
Personal Payload	155kg / 3.1cwt	156kg / 3.1cwt	
Options Payload	0kg / 0cwt	0kg / 0cwt	
Total / Maximum User Payload	155kg / 3.1cwt	156kg / 3.1cwt	
Maximum Hitch Weight	100kg / 1.9cwt	100kg / 1.9cwt	
Upper MTPLM (Optional weight plate upgrade)	1700kg	1700kg	

\* Estimated weights. Please refer to the website for confirmed weights. Note:- Please consult your dealer for terms and conditions regarding a weight plate upgrade to the upper MTPLM.

## VIP dealer specials specifications (based on the models below)

MODEL	460	520	545
Number of Berths	2	3	4
Interior Length	4750mm / 15' 7"	5420mm / 17' 9"	5800mm / 19' 0"
Shipping Length	6380mm / 20' 11"	7050mm / 23' 2"	7430mm / 24' 5"
Overall Width	2310mm / 7' 7"	2310mm / 7' 7"	2310mm / 7' 7"
Overall Height (including T.V Aerial)	2650mm / 8' 8"	2650mm / 8' 8"	2650mm / 8' 8"
Overall Height (including Air Conditioner)	2750mm / 9' 0"	2750mm / 9' 0"	2750mm / 9' 0"
Maximum Headroom	1955mm / 6' 5"	1955mm / 6' 5"	1955mm / 6' 5"
Wheel Rim	5.5J x 14	5.5J x 14	6.0J x 15
Tyre Size	185 R14 104	185 R14 104	195/70 R15 104
Tyre Pressure (bar / psi at quoted MTPLM)	4.5 / 65	4.5 / 65	4.5 / 65
Bed Sizes - mm - option 1	2 x Single 1845 x 725 (6' 0" x 2' 4")	2 x Single 1845 x 725 (6' 0" x 2' 4") 1 x Single 1830 x 720 (6' 0" x 2' 4")	2 x Single 1505 x 725 (5' 0" x 2' 4") 1 x Double 1920 x 1370 (6' 3" x 4' 6")
Bed Sizes - mm - option 2	1 x Double 2075 x 1720 (6' 9" x 5' 8")	1 x Double 2075 x 1720 (6' 9" x 5' 8") 1 x Single 1830 x 720 (6' 0" x 2' 4")	1 x Double 2075 x 1390 (6' 9" x 4' 7") 1 x Double 1920 x 1370 (6' 3" x 4' 6")
MTPLM	1459kg / 28.7cwt	1550kg / 30.5cwt	1677kg / 33cwt
Mass in Running Order	1334kg / 26.3cwt	1408kg / 27.7cwt	1521kg / 29.9cwt
Personal Payload	125kg / 2.4cwt	142kg / 2.8cwt	156kg / 3.1cwt
Options Payload	0kg / 0cwt	0kg / 0cwt	0kg / 0cwt
Total / Maximum User Payload	125kg / 2.4cwt	142kg / 2.8cwt	156kg / 3.1cwt
Maximum Hitch Weight	100kg / 1.9cwt	100kg / 1.9cwt	100kg / 1.9cwt
Upper MTPLM (Optional weight plate upgrade)	1500kg	1550kg	1700kg

\* Estimated weights. Please refer to the website for confirmed weights. Note:- Please consult your dealer for terms and conditions regarding a weight plate upgrade to the upper MTPLM.





## VIP dealer specials specifications (based on the models below)

MODEL	565	575	
Number of Berths	4	4	
Interior Length	5740mm / 18' 10"	5800mm / 19' 0"	
Shipping Length	7370mm / 24' 2"	7430mm / 24' 5"	
Overall Width	2310mm / 7' 7"	2310mm / 7' 7"	
Overall Height (including TV Aerial)	2650mm / 8' 8"	2650mm / 8' 8"	
Overall Height (including Air Conditioner)	2750mm / 9' 0"	2750mm / 9' 0"	
Maximum Headroom	1955mm / 6' 5"	1955mm / 6' 5"	
Wheel Rim	6.0J x 15	6.0J x 15	
Tyre Size	195/70 R15 104	195/70 R15 104	
Tyre Pressure (bar / psi at quoted MTPLM)	4.5 / 65	4.5 / 65	
Bed Sizes - mm - option 1	2 x Single 1505 x 725 (5' 0" x 2' 4") 1 x Single 1910 x 720 (6' 3" x 2' 4") 1 x Single 1825 x 720 (6' 0" x 2' 4")	2 x Single 1505 x 725 (5' 0" x 2' 4") 1 x Double 1875 x 1370 (6' 2" x 4' 6")	
Bed Sizes - mm - option 2	1 x Double 2075 x 1390 (6' 9" x 4' 7") 1 x Single 1910 x 720 (6' 3" x 2' 4") 1 x Single 1825 x 720 (6' 0" x 2' 4")	1 x Double 2075 x 1390 (6' 9" x 4' 7" ) 1 x Double 1875 x 1370 (6' 2" x 4' 6")	
MTPLM	1667kg / 32.8cwt*	1657kg / 32.6cwt	
Mass in Running Order	1512kg / 29.8cwt*	1501kg / 29.5cwt	
Personal Payload	155kg / 3.1cwt	156kg / 3.1cwt	
Options Payload	0kg / 0cwt	0kg / 0cwt	
Total / Maximum User Payload	155kg / 3.1cwt	156kg / 3.1cwt	
Maximum Hitch Weight	100kg / 1.9cwt	100kg / 1.9cwt	
Upper MTPLM (Optional weight plate upgrade)	1700kg	1700kg	

\* Estimated weights. Please refer to the website for confirmed weights. Note:- Please consult your dealer for terms and conditions regarding a weight plate upgrade to the upper MTPLM.

## Laser standard specifications (based on the models below)

MODEL	575 Xcel	650	665
Number of Berths	4	4	4
Interior Length	5800mm / 19' 0"	6265mm / 20' 7"	6265mm / 20' 7"
Shipping Length	7430mm / 24' 5"	7895mm / 25' 11"	7895mm / 25' 11"
Overall Width	2440mm / 8' 0"	2310mm / 7' 7"	2310mm / 7' 7"
Overall Height (including TV Aerial)	2650mm / 8' 8"	2650mm / 8' 8"	2650mm / 8' 8"
Overall Height (including Air Conditioner)	2750mm / 9' 0"	2750mm / 9' 0"	2750mm / 9' 0"
Maximum Headroom	1955mm / 6' 5"	1955mm / 6' 5"	1955mm / 6' 5"
Wheel Rim	6.0J x 15	5.5J x 14	5.5J x 14
Tyre Size	205/70 R15 106	185/70 R14 88	185/70 R14 88
Tyre Pressure (bar / psi at quoted MTPLM)	4.5 / 65	2.4 / 35	2.4 / 35
Bed Sizes - mm - option 1	2 x Single 1505 x 725 (5' 0" x 2' 4") 1 x Double 1875 x 1370 (6' 2" x 4' 6")	2 x Single 1505 x 725 (5' 0" x 2' 4") 1 x Double 1875 x 1370 (6' 2" x 4' 6")	2 x Single 1505 x 725 (5' 0" x 2' 4") 2 x Single 1910 x 800 (6' 3" x 2' 7")
Bed Sizes - mm - option 2	1 x Double 2200 x 1390 (7' 2" x 4' 7") 1 x Double 1875 x 1370 (6' 2" x 4' 6")	1 x Double 2075 x 1390 (6' 9" x 4' 7") 1 x Double 1875 x 1370 (6' 2" x 4' 6")	1 x Double 2075 x 1390 (6' 9" x 4' 7") 2 x Single 1910 x 800 (6' 3" x 2' 7")
MTPLM	1734kg / 34.1cwt	1834kg / 36.1cwt*	1841kg / 36.2cwt
Mass in Running Order	1579kg / 31.1cwt	1674kg / 33cwt*	1681kg / 33.1cwt
Personal Payload	155kg / 3.1cwt	160kg / 3.1cwt	160kg / 3.1cwt
Options Payload	0kg / 0cwt	0kg / 0cwt	0kg / 0cwt
Total / Maximum User Payload	155kg / 3.1cwt	160kg / 3.1cwt	160kg / 3.1cwt
Maximum Hitch Weight	100kg / 1.9cwt	100kg / 1.9cwt	100kg / 1.9cwt
Upper MTPLM (Optional weight plate upgrade)	1800kg	1900kg	1900kg

\* Estimated weights. Please refer to the website for confirmed weights. Note:- Please consult your dealer for terms and conditions regarding a weight plate upgrade to the upper MTPLM.



## Laser standard specifications (based on the models below)

MODEL	675		
Number of Berths	4		
Interior Length	6265mm / 20' 7"		
Shipping Length	7895mm / 25' 11"		
Overall Width	2310mm / 7' 7"		
Overall Height (including TV Aerial)	2650mm / 8' 8"		
Overall Height (including Air Conditioner)	2750mm / 9' 0"		
Maximum Headroom	1955mm / 6' 5"		
Wheel Rim	5.5J x 14		
Tyre Size	185/70 R14 88		
Tyre Pressure (bar / psi at quoted MTPLM)	2.4 / 35		
Bed Sizes - mm - option 1	2 x Single 1505 x 725 (5' 0" x 2' 4") 1 x Double 1875 x 1370 (6' 2" x 4' 6")		
Bed Sizes - mm - option 2	1 x Double 2075 x 1390 (6' 9" x 4' 7") 1 x Double 1875 x 1370 (6' 2" x 4' 6")		
MTPLM	1817kg / 35.7cwt		
Mass in Running Order	1657kg / 32.6cwt		
Personal Payload	160kg / 3.1cwt		
Options Payload	0kg / 0cwt		
Total / Maximum User Payload	160kg / 3.1cwt		
Maximum Hitch Weight	100kg / 1.9cwt		
Upper MTPLM (Optional weight plate upgrade)	1900kg		

\* Estimated weights. Please refer to the website for confirmed weights. Note:- Please consult your dealer for terms and conditions regarding a weight plate upgrade to the upper MTPLM.

## Laser Xcel standard specifications (based on the models below)

MODEL	Xcel 845	Xcel 850	Xcel 875
Number of Berths	4	4	4
Interior Length	6265mm / 20' 7"	6265mm / 20' 7"	6265mm / 20' 7"
Shipping Length	7895mm / 25' 11"	7895mm / 25' 11"	7895mm / 25' 11"
Overall Width	2440mm / 8' 0"	2440mm / 8' 0"	2440mm / 8' 0"
Overall Height (including T.V Aerial)	2650mm / 8' 8"	2650mm / 8' 8"	2650mm / 8' 8"
Overall Height (including Air Conditioner)	2750mm / 9' 0"	2750mm / 9' 0"	2750mm / 9' 0"
Maximum Headroom	1955mm / 6' 5"	1955mm / 6' 5"	1955mm / 6' 5"
Wheel Rim	5.5J x 14	5.5J x 14	5.5J x 14
Tyre Size	185/70 R14 88	185/70 R14 88	185/70 R14 88
Tyre Pressure (bar / psi at quoted MTPLM)	2.4 / 35	2.4 / 35	2.4 / 35
Bed Sizes - mm - option 1	2 x Single 1980 x 760 (6' 6" x 2' 6") 1710 x 720 (5' 7" x 2' 4") 1 x Double 1890 x 1460 (6' 2" x 4' 9")	2 x Single 1505 x 725 (5' 0" x 2' 4") 1 x Double 1875 x 1370 (6' 2" x 4' 6")	2 x Single 1505 x 725 (5' 0" x 2' 4") 1x Double 1875 x 1370 (6' 2" x 4' 6")
Bed Sizes - mm - option 2	1 x Double 1980 x 1710 (6' 6" x 4' 7") 1 x Double 1890 x 1460 (6' 2" x 4' 9")	1 x Double 2200 x 1390 (7' 2" x 4' 7") 1 x Double 1875 x 1370 (6' 2" x 4' 6")	1 x Double 2200 x 1390 (7' 2" x 4' 7") 1 x Double 1875 x 1370 (6' 2" x 4' 6")
MTPLM	1927kg / 37.9cwt	1927kg / 37.9cwt	1885kg / 37.1cwt
Mass in Running Order	1767kg / 34.8cwt	1767kg / 34.8cwt	1725kg / 34cwt
Personal Payload	160kg / 3.1cwt	160kg / 3.1cwt	160kg / 3.1cwt
Options Payload	0kg / 0cwt	0kg / 0cwt	0kg / 0cwt
Total / Maximum User Payload	160kg / 3.1cwt	160kg / 3.1cwt	160kg / 3.1cwt
Maximum Hitch Weight	100kg / 1.9cwt	100kg / 1.9cwt	100kg / 1.9cwt
Upper MTPLM (Optional weight plate upgrade)	2000kg	2000kg	2000kg

\* Estimated weights. Please refer to the website for confirmed weights. Note:- Please consult your dealer for terms and conditions regarding a weight plate upgrade to the upper MTPLM.



## Laser dealer specials specifications (based on the models below)

MODEL	575 Xcel	650	665
Number of Berths	4	4	4
Interior Length	5800mm / 19' 0"	6265mm / 20' 7"	6265mm / 20' 7"
Shipping Length	7430mm / 24' 5"	7895mm / 25' 11"	7895mm / 25' 11"
Overall Width	2440mm / 8' 0"	2310mm / 7' 7"	2310mm / 7' 7"
Overall Height (including TV Aerial)	2650mm / 8' 8"	2650mm / 8' 8"	2650mm / 8' 8"
Overall Height (including Air Conditioner)	2750mm / 9' 0"	2750mm / 9' 0"	2750mm / 9' 0"
Maximum Headroom	1955mm / 6' 5"	1955mm / 6' 5"	1955mm / 6' 5"
Wheel Rim	6.0J x 15	5.5J x 14	5.5J x 14
Tyre Size	205/70 R15 106	185/70 R14 88	185/70 R14 88
Tyre Pressure (bar / psi at quoted MTPLM)	4.5 / 65	2.4 / 35	2.4 / 35
Bed Sizes - mm - option 1	2 x Single 1505 x 725 (5' 0" x 2' 4") 1 x Double 1875 x 1370 (6' 2" x 4' 6")	2 x Single 1505 x 725 (5' 0" x 2' 4") 1 x Double 1875 x 1370 (6' 2" x 4' 6")	2 x Single 1505 x 725 (5' 0" x 2' 4") 2 x Single 1910 x 800 max. (6' 3" x 2' 7")
Bed Sizes - mm - option 2	1 x Double 2200 x 1390 (7' 2" x 4' 7") 1 x Double 1875 x 1370 (6' 2" x 4' 6")	1 x Double 2075 x 1390 (6' 9" x 4' 7") 1 x Double 1875 x 1370 (6' 2" x 4' 6")	1 x Double 2075 x 1390 (6' 9" x 4' 7") 2 x Single 1910 x 800 max. (6' 3" x 2' 7")
MTPLM	1740kg / 34.3cwt	1849kg / 36.4cwt	1856kg / 36.5cwt
Mass in Running Order	1585kg / 31.2cwt	1689kg / 33.2cwt	1696kg / 33.4cwt
Personal Payload	155kg / 3.1cwt	160kg / 3.1cwt	160kg / 3.1cwt
Options Payload	0kg / 0cwt	0kg / 0cwt	0kg / 0cwt
Total / Maximum User Payload	155kg / 3.1cwt	160kg / 3.1cwt	160kg / 3.1cwt
Maximum Hitch Weight	100kg / 1.9cwt	100kg / 1.9cwt	100kg / 1.9cwt
Upper MTPLM (Optional weight plate upgrade)	1800kg	1900kg	1900kg

\* Estimated weights. Please refer to the website for confirmed weights. Note:- Please consult your dealer for terms and conditions regarding a weight plate upgrade to the upper MTPLM.

## Laser dealer specials specifications (based on the models below)

MODEL	675		
Number of Berths	4		
Interior Length	6265mm / 20' 7"		
Shipping Length	7895mm / 25' 11"		
Overall Width	2310mm / 7' 7"		
Overall Height (including T.V Aerial)	2650mm / 8' 8"		
Overall Height (including Air Conditioner)	2750mm / 9' 0"		
Maximum Headroom	1955mm / 6' 5"		
Wheel Rim	5.5J x 14		
Tyre Size	185/70 R14 88		
Tyre Pressure (bar / psi at quoted MTPLM)	2.4 / 35		
Bed Sizes - mm - option 1	2 x Single 1505 x 725 (5' 0" x 2' 4") 1 x Double 1875 x 1370 (6' 2" x 4' 6")		
Bed Sizes - mm - option 2	1 x Double 2075 x 1390 (6' 9" x 4' 7") 1 x Double 1875 x 1370 (6' 2" x 4' 6")		
MTPLM	1832kg / 36.1cwt		
Mass in Running Order	1672kg / 32.9cwt		
Personal Payload	160kg / 3.1cwt		
Options Payload	0kg / 0cwt		
Total / Maximum User Payload	160kg / 3.1cwt		
Maximum Hitch Weight	100kg / 1.9cwt		
Upper MTPLM (Optional weight plate upgrade)	1900kg		

\* Estimated weights. Please refer to the website for confirmed weights. Note:- Please consult your dealer for terms and conditions regarding a weight plate upgrade to the upper MTPLM.



## Laser Xcel dealer specials specifications (based on the models below)

MODEL	Xcel 845	Xcel 850	Xcel 875
Number of Berths	4	4	4
Interior Length	6265mm / 20' 7"	6265mm / 20' 7"	6265mm / 20' 7"
Shipping Length	7895mm / 25' 11"	7895mm / 25' 11"	7895mm / 25' 11"
Overall Width	2440mm / 8' 0"	2440mm / 8' 0"	2440mm / 8' 0"
Overall Height (including T.V Aerial)	2650mm / 8' 8"	2650mm / 8' 8"	2650mm / 8' 8"
Overall Height (including Air Conditioner)	2750mm / 9' 0"	2750mm / 9' 0"	2750mm / 9' 0"
Maximum Headroom	1955mm / 6' 5"	1955mm / 6' 5"	1955mm / 6' 5"
Wheel Rim	5.5J x 14	5.5J x 14	5.5J x 14
Tyre Size	185/70 R14 88	185/70 R14 88	185/70 R14 88
Tyre Pressure (bar / psi at quoted MTPLM)	2.4 / 35	2.4 / 35	2.4 / 35
Bed Sizes - mm - option 1	2 x Single 1980 x 760 (6' 6" x 2' 6") 1 x Double 1890 x 1460 (6' 2" x 4' 9")	2 x Single 1505 x 725 (5' 0" x 2' 4") 1 x Double 1875 x 1370 (6' 2" x 4' 6")	2 x Single 1505 x 725 (5' 0" x 2' 4") 1 x Double 1875 x 1370 (6' 2" x 4' 6")
Bed Sizes - mm - option 2	1 x Double 1980 x 1710 (6' 6" x 4' 7") 1 x Double 1890 x 1460 (6' 2" x 4' 9")	1 x Double 2200 x 1390 (7' 2" x 4' 7") 1 x Double 1875 x 1370 (6' 2" x 4' 6")	1 x Double 2200 x 1390 (7' 2" x 4' 7") 1 x Double 1875 x 1370 (6' 2" x 4' 6")
MTPLM	1942kg / 38.2cwt	1942kg / 38.2cwt	1899kg / 37.4cwt
Mass in Running Order	1782kg / 35.1cwt*	1782kg / 35.1cwt	1739kg / 34.2cwt
Personal Payload	160kg / 3.1cwt	160kg / 3.1cwt	160kg / 3.1cwt
Options Payload	0kg / 0cwt	0kg / 0cwt	0kg / 0cwt
Total / Maximum User Payload	160kg / 3.1cwt	160kg / 3.1cwt	160kg / 3.1cwt
Maximum Hitch Weight	100kg / 1.9cwt	100kg / 1.9cwt	100kg / 1.9cwt
Upper MTPLM (Optional weight plate upgrade)	2000kg	2000kg	2000kg

\* Estimated weights. Please refer to the website for confirmed weights. Note:- Please consult your dealer for terms and conditions regarding a weight plate upgrade to the upper MTPLM.

## Lusso standard specifications

MODEL	Lusso		
Number of Berths	4		
Interior Length	6265mm / 20' 7"		
Shipping Length	7895mm / 25' 11"		
Overall Width	2440mm / 8' 0"		
Overall Height (including TV Aerial)	2650mm / 8' 8"		
Overall Height (including Air Conditioner)	2750mm / 9' 0"		
Maximum Headroom	1955mm / 6' 5"		
Wheel Rim	5.5J x 14		
Tyre Size	185/70 R14 88		
Tyre Pressure (bar / psi at quoted MTPLM)	2.4 / 35		
Bed Sizes - mm - option 1	2 x Single 2200 x 650 (7' 2" x 2' 1") 1790 x 650 (5' 10" x 2' 1") 1 x Double 1875 x 1370 (6' 2" x 4' 6")		
Bed Sizes - mm - option 2	1 x Double 2200 x 1790 (7' 2" x 5' 10") 1 x Double 1875 x 1370 (6' 2" x 4' 6")		
MTPLM	1960kg / 38.6cwt*		
Mass in Running Order	1800kg / 35.4cwt*		
Personal Payload	160kg / 3.1cwt		
Options Payload	0kg / 0cwt		
Total / Maximum User Payload	160kg / 3.1cwt		
Maximum Hitch Weight	100kg / 1.9cwt		
Upper MTPLM (Optional weight plate upgrade)	2000kg		

\* Estimated weights. Please refer to the website for confirmed weights. Note:- Please consult your dealer for terms and conditions regarding a weight plate upgrade to the upper MTPLM.







# CHANGE OF OWNERSHIP

## NOTIFICATION OF CHANGE OF OWNERSHIP

If you buy this caravan as a used unit, please notify the change of ownership by completing this page, detaching it and sending it together with a cheque for £50 to:

Coachman Caravan Company Limited  
Aftercare Operations, Amsterdam Road  
Sutton Fields Industrial Estate, Hull  
East Yorkshire HU7 0XF

DETAILS OF CARAVAN    Model: .....  
Vehicle Identification No: .....

PREVIOUS OWNER    Name: .....  
Address: .....  
.....

NEW OWNER    Name: .....  
Address: .....  
.....

Telephone Day: ..... Evening: .....

Email: .....

Postcode: .....

Date of Purchase: .....

As the new owner of a Coachman Caravan we would like to send you occasional marketing information on our products, services and events. If you would like to receive this information, please tick the appropriate boxes below. - Note: This is for the new owner, not the current owner.

I would like Coachman Caravans to send me marketing information via: ☐ Phone ☐ Email ☐ Text ☐ Post

Please note that the benefit of any unexpired warranty cannot be transferred to the new owner until change of ownership details above together with a cheque for £50 have been received. All personal details submitted in the form above will be kept private and confidential. You can read our full privacy policy on our website, [www.coachman.co.uk/privacy-policy](http://www.coachman.co.uk/privacy-policy).







Diamondbrite  
LEISURE



# COACHMAN

## Coachman Caravan Company Ltd

Amsterdam Road  
Sutton Fields Industrial Estate  
Hull  
HU7 0XF  
Email: [info@coachman.co.uk](mailto:info@coachman.co.uk)

[www.coachman.co.uk](http://www.coachman.co.uk)

Coachman Caravan Company Limited reserves the right to, and does from time to time alter technical specifications, prices and model ranges as materials, model improvements and conditions demand. Therefore can accept no responsibility for discrepancies between these and subsequent models.

All Coachman models have been certified by the National Caravan Council for compliance with stringent European Standards, British Legislation and industry set Codes of Practice, specifically relating to health and safety issues. The approval process covers the testing and inspection of critical areas of the product from fire safety, weights and dimensions to gas, electrics and ventilation.

Every Coachman caravan carries the "NCC Approved Caravan" badge. The NCC also conducts unannounced inspections at the Coachman factory to ensure continued compliance. NCC Approval gives you peace of mind that your caravan is legal and safe.

Please note: Touring caravans are designated by the model year. The model year runs from the 1st September to the 31st August.